



# Wash Sensor H Dental

According to  
**RKI/KRINKO 2012**  
Appendix 3  
Our recommendation: Carry out the test once a day  
with the normal load of the device and always use it  
when cleaning Critical B instruments.

Conform to  
**DIN EN ISO**  
15883-5:2021

Indicator system for testing cleaning performance in hollow instruments such as turbines, handpieces, and contra-angle handpieces in washer-disinfectors (WDs)

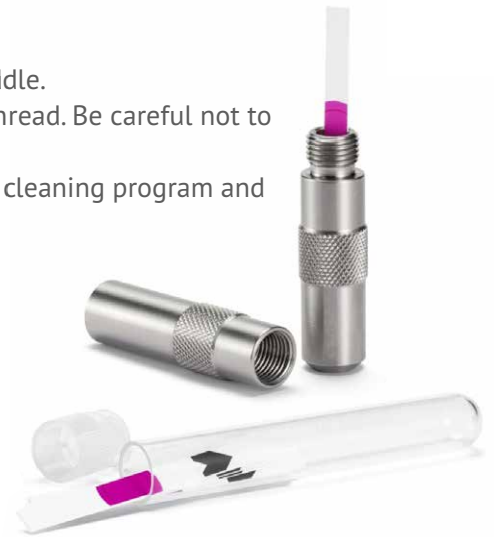
## Product details

With the Wash Sensor H Dental, Stericop offers a simple and routine-friendly way to test the cleaning process of hollow instruments.

## Application

1. Unscrew the Wash Sensor H Dental test body in the middle.
2. Insert the indicator strip into the part with the visible thread. Be careful not to touch the red test soil.
3. Screw the test body back together completely. Start the cleaning program and let it run through fully.

**Note:** For daily routine checks, the test system should always be included during a normal load. Please also follow the manufacturer's instructions for correct loading of your WD.



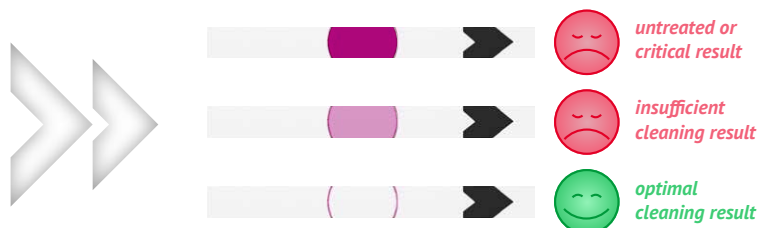
## Evaluation

After the cleaning program has finished, open the test body and remove the indicator strip.

**Caution:** The test body may still be hot!

Check if the red spot has been completely removed. Only then is the cleaning process considered successful.

Record the result in the WD logbook.



Stericop GmbH & Co. KG  
Biedrichstraße 10  
61200 Wölfersheim

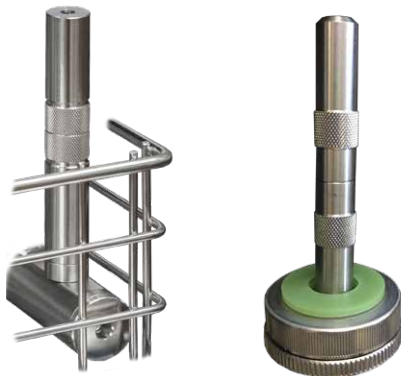
T +49 (0) 6036 984 33 0  
F +49 (0) 6036 984 33 21  
info@stericop.de  
www.stericop.de

Product	Article number	Package size	Storage	Shelf life
Wash Sensor H Indicator Strips	832025	25 pieces	dry at room temperature	4 years from date of manufacture
	832050	50 pieces		
	832100	100 pieces		



# Wash Sensor H Dental Adapters for all WDs

The Wash Sensor H Dental test body offers a variety of connection options depending on your requirements.



## Melag und Miele:

The Wash Sensor H Dental with mounted adapter (835003) can be screwed directly into the Melatherm 10 or Miele spray bar.

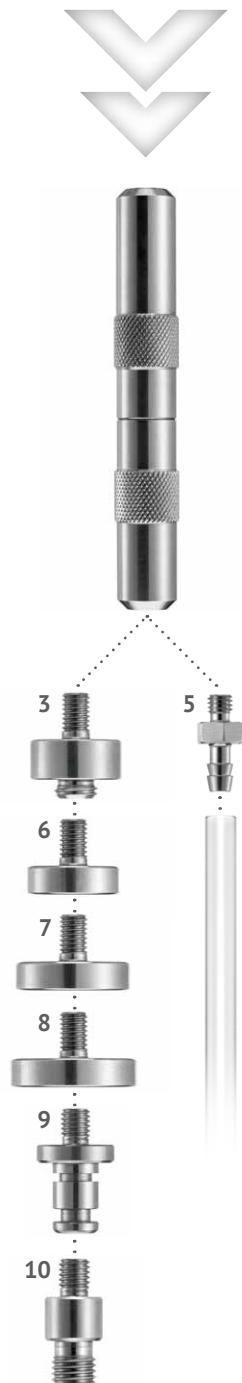
## Silikonadapter with different inner diameters:

The Wash Sensor H Dental with mounted adapter (835006–835008) fits directly into the silicone adapters for transmission instruments.

## SciCan:

The Wash Sensor H Dental with mounted adapter (835009) fits directly into the LCS internal cleaning system.

**Need help finding the right adapter for your device?  
Feel free to contact us!**



Stericop GmbH & Co. KG  
Biedrichstraße 10  
61200 Wölfersheim

T +49 (0) 6036 984 33 0  
F +49 (0) 6036 984 33 21  
info@stericop.de  
www.stericop.de

Test body	Article number	Description	Diameter
Wash Sensor H Dental Adapter	835003	for spray bar/injector rail (Melag, Miele)	–
	835005	with hose nozzle	4 mm
	835006	for silicone adapters	16 mm
	835007	for silicone adapters	20 mm
	835008	for silicone adapters	22 mm
	835009	SciCan-LCS	–
	835010	for Miele upper basket 0177/1	–